



Website: www.heber.co.uk
Sales: +44 (0) 1453 732302
sales@heber.co.uk
Support: +44 (0) 1453 732312
support@heber.co.uk



Pluto 6 Development Kit Reduces development time and enables rapid time-to-market.

Everything you need in one kit

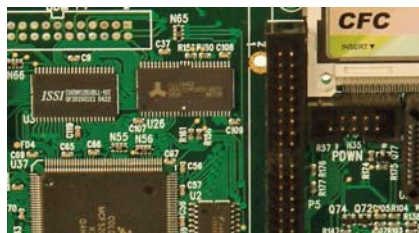
In the fast moving world of video gaming, rapid development is essential. The Pluto 6 Development Kit has been specifically designed for embedded gaming developers, to save months of engineering and development effort and to achieve a fast time-to-market.

Complete development environment

The Pluto 6 Development Kit includes a Pluto 6 evaluation board which has multiple connectors, switches, lamps and displays that allow real-world conditions to be simulated. Peripheral devices can also be connected to the evaluation board to test the functionality of your newly written gaming code. Also included is a CD-ROM containing a software library of low level function drivers and full documentation. This makes it even easier for developers to quickly produce their games.

Free customer support

Heber offers free customer support for developers using the Pluto 6 Development Kit. A dedicated team of support engineers will assist with technical queries during the early development period to make the learning curve easier and help reduce your time-to-market.



Key features

- Pluto 6 controller
- Pluto 6 evaluation board
- De-bug tools
- Software library and drivers
- Demonstration programs
- User manuals

Ideal for...

- Embedded gaming systems developers
- Single video gaming systems developers
- Dual video gaming systems developers
- Spin reel gaming systems developers

The Heber advantage

When you buy a Pluto 6 Development Kit from Heber you benefit from:

- 25 years gaming industry experience
- 14 years Pluto design heritage
- Compliance with worldwide gaming standards
- Free customer support
- Our team of dedicated specialist engineers
- Total product dependability

Pluto 6 Development kit technical specifications

Pluto 6 Development Kit Contents

- Pluto 6 board
- Pluto 6 evaluation board
- 2off Calypso 32 video cards
- Programmed Compact Flash card (256MB)
- Compact Flash card reader/writer
- RS232 serial/parallel leads
- 25 way D-type parallel lead
- 25 way to 9 way D-type converter
- FPGA extractor tool
- ATX Power supply unit
- Power supply cable
- P&E® Background Debug Module with debug software
- P&E® debug cable
- User documentation
- User manuals & Help files
- CD-ROM

Pluto 6 Development Kit CD-ROM Contents

Example applications which may be used as starting points for further development with your gaming code

Software library with low level drivers for:

- Graphics
- Audio
- Serial communication
- Customer security monitoring
- Multiplexed inputs
- Multiplexed lamps
- M-Bus
- ATA
- Device manager
- VFD
- Inputs
- Outputs

Datasheets for ColdFire® and Cremson CPUs

Software user manual Help file

Pluto 6 Hardware manual

Compact Flash Card Contents

Standard functionality demo application

Evaluation Board Connectors, Switches & Indicators

- 32off Input switch array
- 64off Open drain outputs
- 256 Multiplex lamp matrix
- 6off Reel connectors
- Stake and Percentage key connectors and simulation switches
- 1off RS485/TTL connector
- 2off HII/ccTalk connectors
- Multi-character Vacuum Fluorescent Display on board
- 32 character, 7 segment displays
- 3off 9pin D-type male serial ports, each with 8 indicators
- 1off 25 pin D-type male serial port with 8 indicators
- Meter current sense switch and indicator
- Connectors for power off input monitoring and simulation switches
- Power input connectors and indicators
- Dual 8 ohm speakers

System Requirements

PC running Windows® 2000 or Windows® XP with CD-ROM drive



Related datasheets

Pluto 6
Datasheet 80-20231

Pluto 32
Datasheet 80-20242

Datasheet 80-20244-1 06/08

© Heber Ltd 2008
Heber Ltd, Belvedere Mill, Chalford,
Stroud, GL6 8NT. UK

Precise specifications may change
without prior notice. E&OE.

This document does not constitute
an offer for the sale of any particular
product. All trademarks are
acknowledged.