

THIRD ANGLE PROJECTION 

ALL DIMENSIONS IN MILLIMETERS

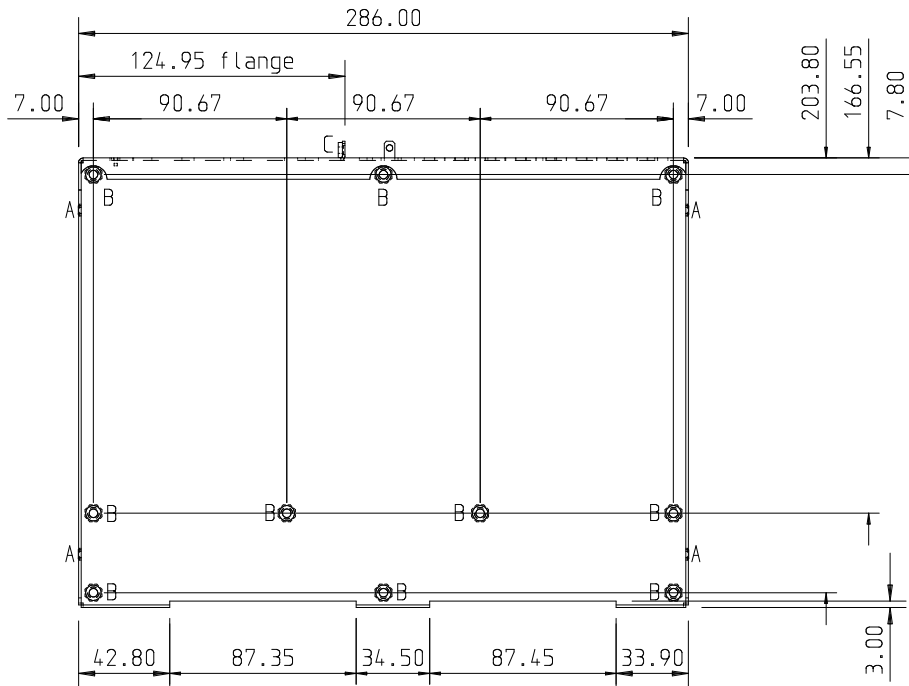
DO NOT SCALE

IF IN DOUBT ASK

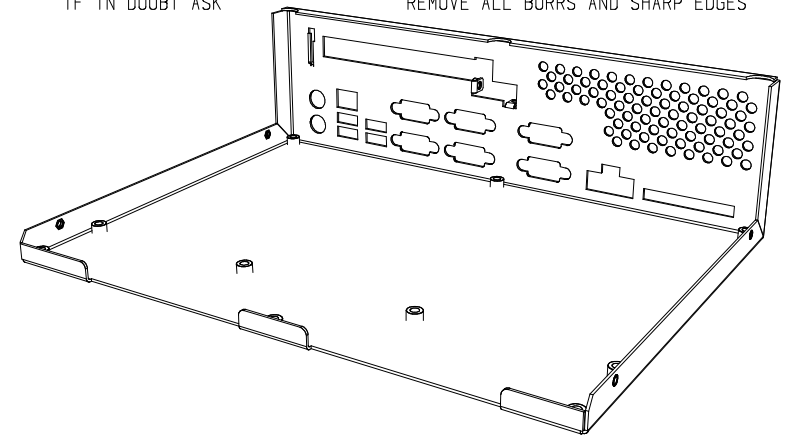
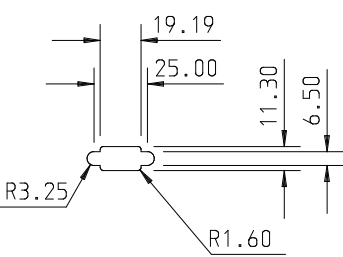
REMOVE ALL BURRS AND SHARP EDGES

Cut-out Detail

'A' = 14.0 x 11.0  
 'B' = 14.0 x 6.0 (x4)  
 'C' = 25.9 x 10.5  
 with a 6.0 x 4.0 cut-out  
 'D' = 47.0 x 6.0



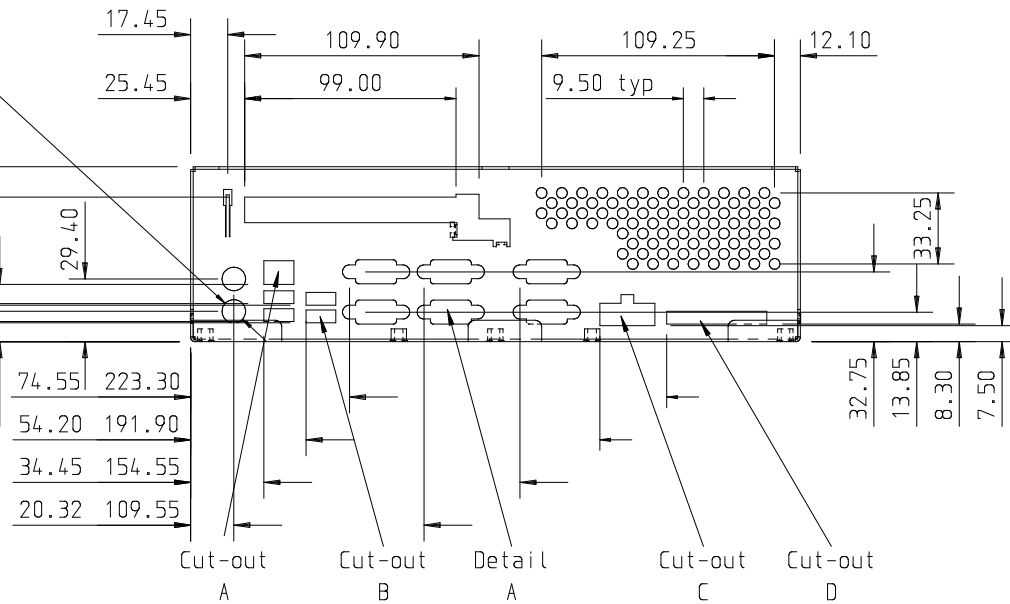
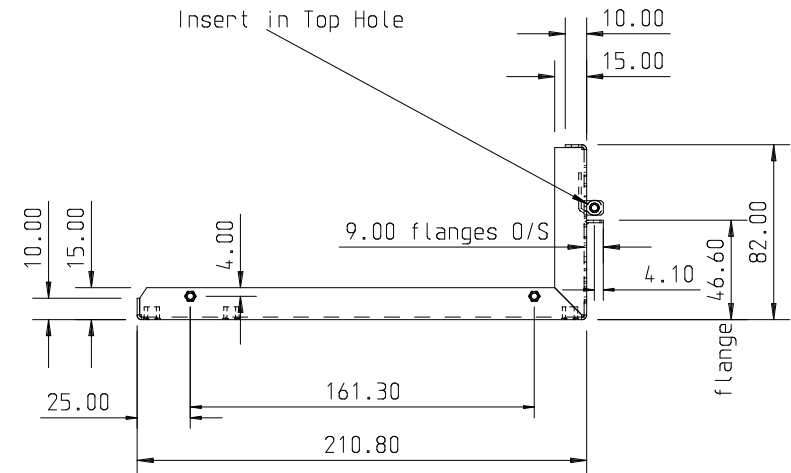
Detail 'A'



Insert Detail

4 'A' Holes - M3 Flush fitting s/c Bushes (F-M3-1-Z1)  
 10 'B' - M3x 6 Stand-off (SO-M3-6-Z1)  
 1 'C' Hole - M3 s/c bush (S-M3-1-Z1)

Insert in Top Hole



Issue	Date	Modification	Init
1	01/06/09	Part No brought into line with Heber with slight changes	
2	19/06/09	Up-issued - Side flanges increased & flange moved down by 5mm	
3	08/09/09	Up-issued - Customer changes - VERY slight changes	

Drawn By  
 M.Cleaver  
 Customer  
 Heber

BROXTON INDUSTRIES Ltd  
 General Tolerance  
 Unless Otherwise  
 Linear +/- 0.25mm  
 Angular +/- 0.5 Deg

Material  
 1.2mm Galv.

Title  
 Chassis - Nucleus

Finish

Part No  
 61-20722